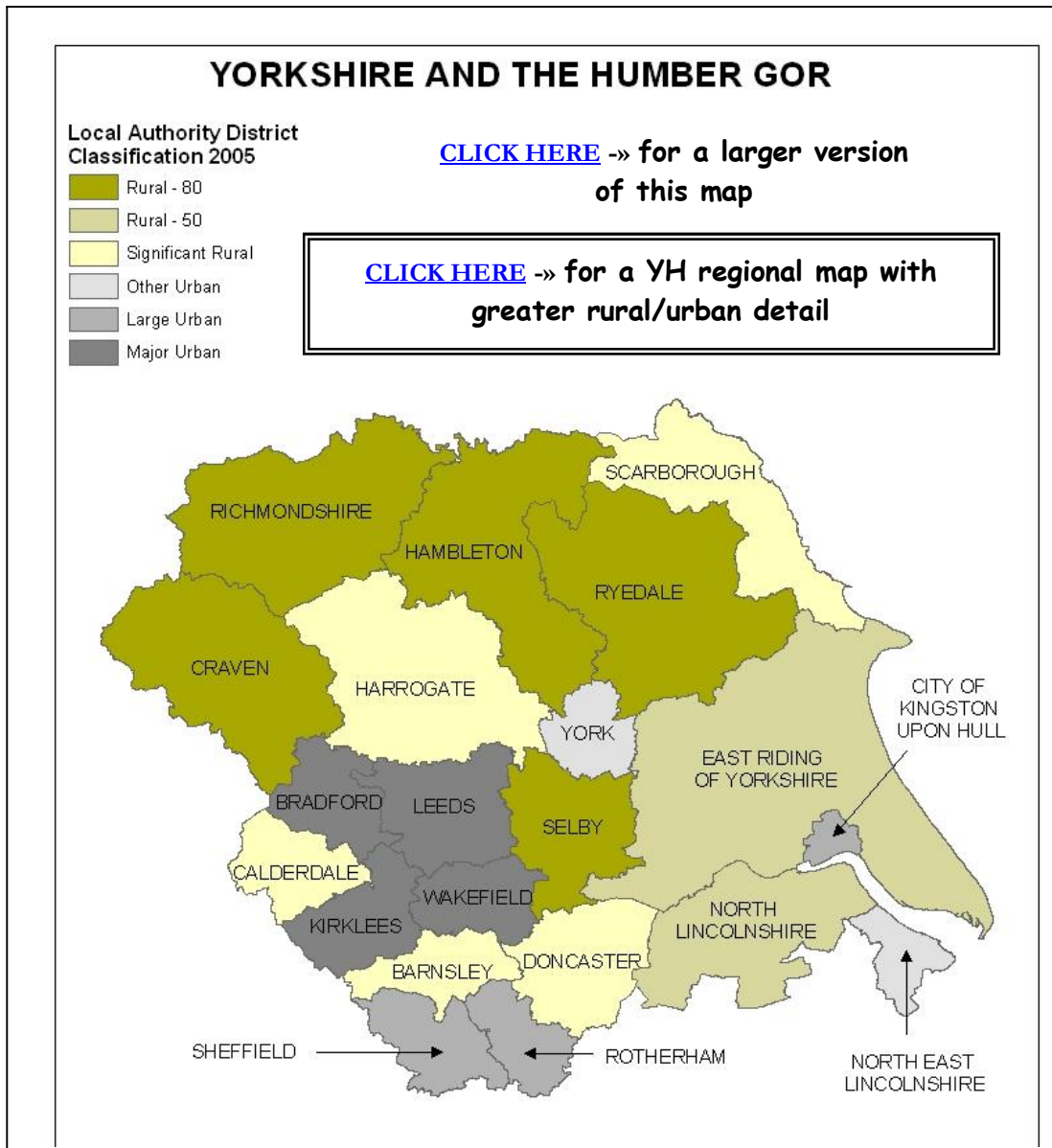


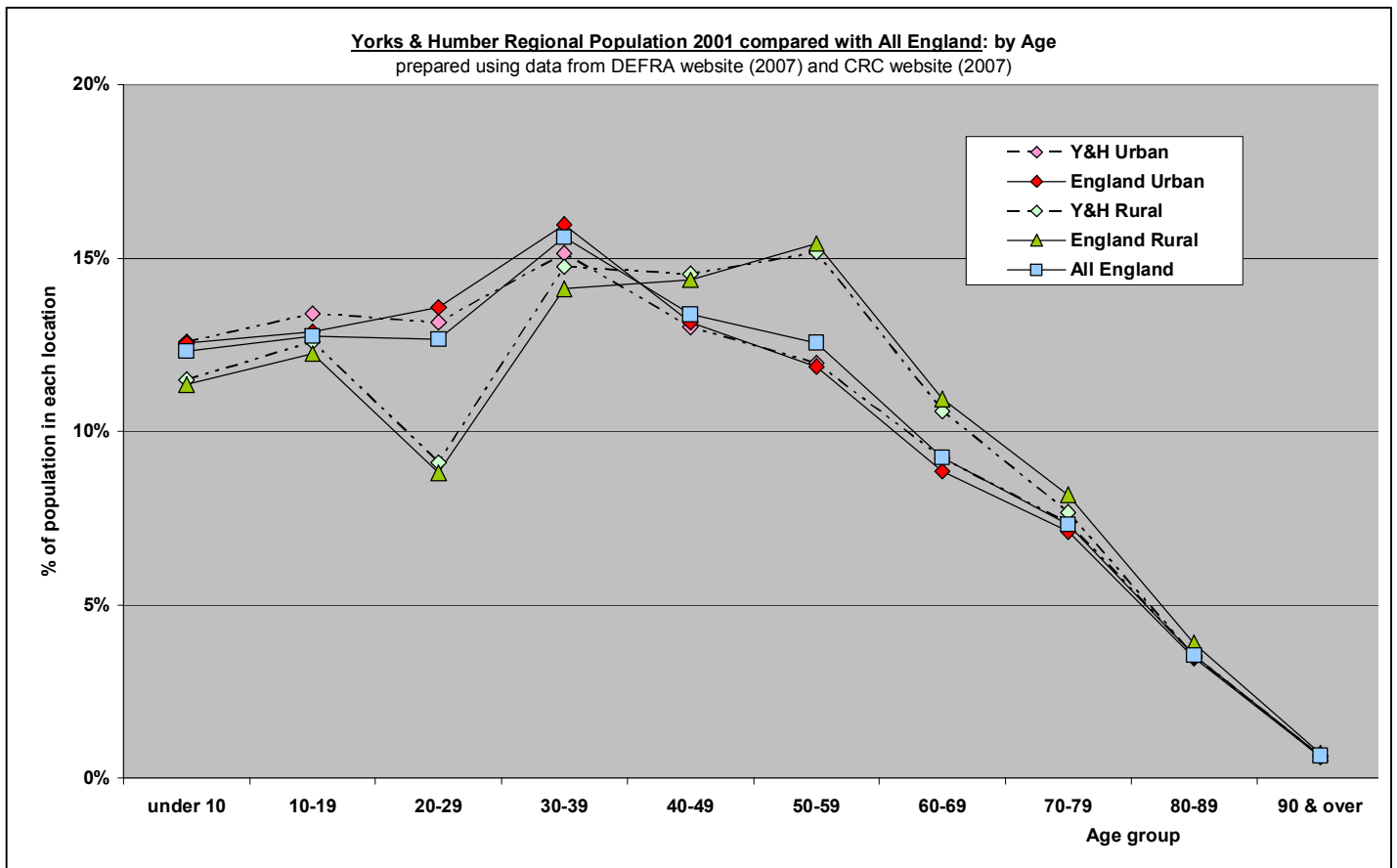
## 2 RURAL STATISTICS: APPENDICES

### Appendix 1a: "Case Study: YORKSHIRE & HUMBER REGION"

One government region has been chosen as an example to show the differences between different rural Local Authority Districts [LADs, or - more usually - simply "districts"] within that overall region ... and by comparison with both the region as a whole, and England as a whole. (Theoretically, regional Unitary Authorities [UAs] should also be included, except that there are no UAs that fall within the general rural classification of "districts".)

Yorkshire & Humber Region (YH) has been chosen, for no special reason. It doesn't contain too many districts and these include a fairly representative spread of district categories (from 5 Rural 80 districts [R80] to 4 Major Urban [MU] districts) and of rural population (from a maximum of 100% - in Richmondshire District - to 1.8% in Sheffield UA). Nearly any other district could have been chosen, with the exception of London, which is almost totally urban - only 0.2% of the population being rural; and the SE Region (SR), which has fewer rural residents and a lower proportion of the rural district categories.





[CLICK HERE](#) -> for a larger image

This chart compares the age profile for the rural & urban populations of YH region with England as a whole, and the overall rural & urban populations of England. It is clear that the region overall has a population profile little different from England as a whole. More detailed breakdowns can be produced:

[CLICK HERE](#) -> for a graph comparing YH rural & England rural

[CLICK HERE](#) -> for a graph comparing YH urban & England urban

[CLICK HERE](#) -> for a graph comparing YH rural & urban

[CLICK HERE](#) -> for a graph comparing YH rural population by settlement type

[CLICK HERE](#) -> for a graph comparing YH rural population by sparsity

As a 'baseline', the same information is available for England as a whole:

[CLICK HERE](#) -> for a graph comparing England rural & urban

[CLICK HERE](#) -> for a graph comparing England rural population by settlement type

[CLICK HERE](#) -> for a graph comparing England rural population by sparsity

Another reason for using Yorkshire & Humber Region as a case study is the work required to prepare the data found in the public domain. Time & resources were not available to do this for all English regions (excepting London, as explained above). They are listed here:

East of England (EE)

East Midlands (EM)

North East (NE)

North West (NW)

South East (SE)

South West (SW)

West Midlands (WM)

Yorkshire & Humber (YH)

If, however, you want to know how to prepare such material for your own region or district, contact the Training & Resources Officer at the Arthur Rank Centre (ARC):

Phone: 024-7685-3068

E-mail: [resources@arthurrankcentre.org.uk](mailto:resources@arthurrankcentre.org.uk)

Post: Arthur Rank Centre, Stoneleigh Park, Warwickshire, CV8 2LZ

Similar constraints, and our particular focus on "the rural", has dictated that we only provide detailed information about the *rural* districts in Yorkshire & Humber.

[[CLICK HERE](#) -> for a table of YH districts & explanation of their categorisation]

### RURAL 80 (R80) DISTRICTS:

#### Craven, Hambleton, Richmondshire, Ryedale & Selby

[CLICK HERE](#) -> for chart comparing YH R80 district rural populations by settlement type

[CLICK HERE](#) -> for chart comparing YH R80 district rural populations by sparsity

[CLICK HERE](#) -> for Craven district population profile & comparison graphs

[CLICK HERE](#) -> for Hambleton district population profile & comparison graphs

[CLICK HERE](#) -> for Richmondshire district population profile & comparison graphs

[CLICK HERE](#) -> for Ryedale district population profile & comparison graphs

[CLICK HERE](#) -> for Selby district population profile & comparison graphs

### RURAL 50 (R50) DISTRICTS:

#### East Riding of Yorkshire & North Lincolnshire

[CLICK HERE](#) -> for chart comparing YH R50 district rural populations by settlement type

[CLICK HERE](#) -> for chart comparing YH R50 district rural populations by sparsity

[CLICK HERE](#) -> for East Riding district population profile & comparison graphs

[CLICK HERE](#) -> for N Lincolnshire district population profile & comparison graphs

### SIGNIFICANT RURAL (SR) DISTRICTS:

#### Barnsley, Calderdale, Doncaster, Harrogate & Scarborough

[CLICK HERE](#) -> for chart comparing YH SR district rural populations by settlement type

[CLICK HERE](#) -> for chart comparing YH SR district rural populations by sparsity

[CLICK HERE](#) -> for Barnsley district population profile & comparison graphs

[CLICK HERE](#) -> for Calderdale district population profile & comparison graphs

[CLICK HERE](#) -> for Doncaster district population profile & comparison graphs

[CLICK HERE](#) -> for Harrogate district population profile & comparison graphs

[CLICK HERE](#) -> for Scarborough district population profile & comparison graphs

For the most rural (R80) and middle (SR) categories of district it is particularly instructive to look at the comparison between the individual district rural & urban profiles, and between these and England overall. Substantial differences are evident, giving a clear indication of the nature & extent of the differences between largely rural areas and the country as a whole. Obviously, such differences will be more marked - and fluctuate far more - the more 'locally' the profiles are produced.

[CLICK HERE](#) -> to return to the start of this section

[CLICK HERE](#) -> to return to Unit 2.04:

*"The 'Make Up' of - and Changes to - the Rural Population"*

[CLICK HERE](#) -> to return to breakdown of Unit 2

[CLICK HERE](#) -> to go to the Project website "Home Page"